

Proficiency HMI/SCADA - iFIX

What's new in version 5.1?

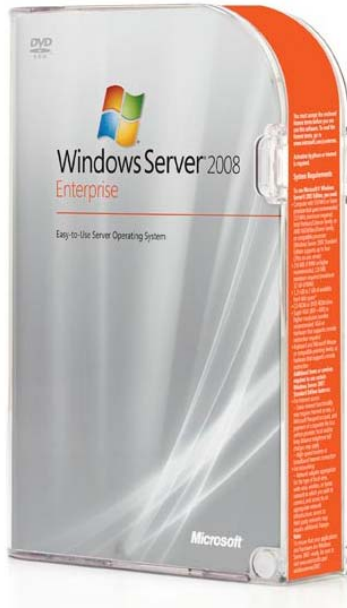


imagination at work

iFIX 5.1 at a glance

- Technology Updates
- The Analytical SCADA
- Failover Enhancements

New Operating Systems Support



**Microsoft
Windows Server 2008, 32-bit**

**Full support,
including Terminal Services**

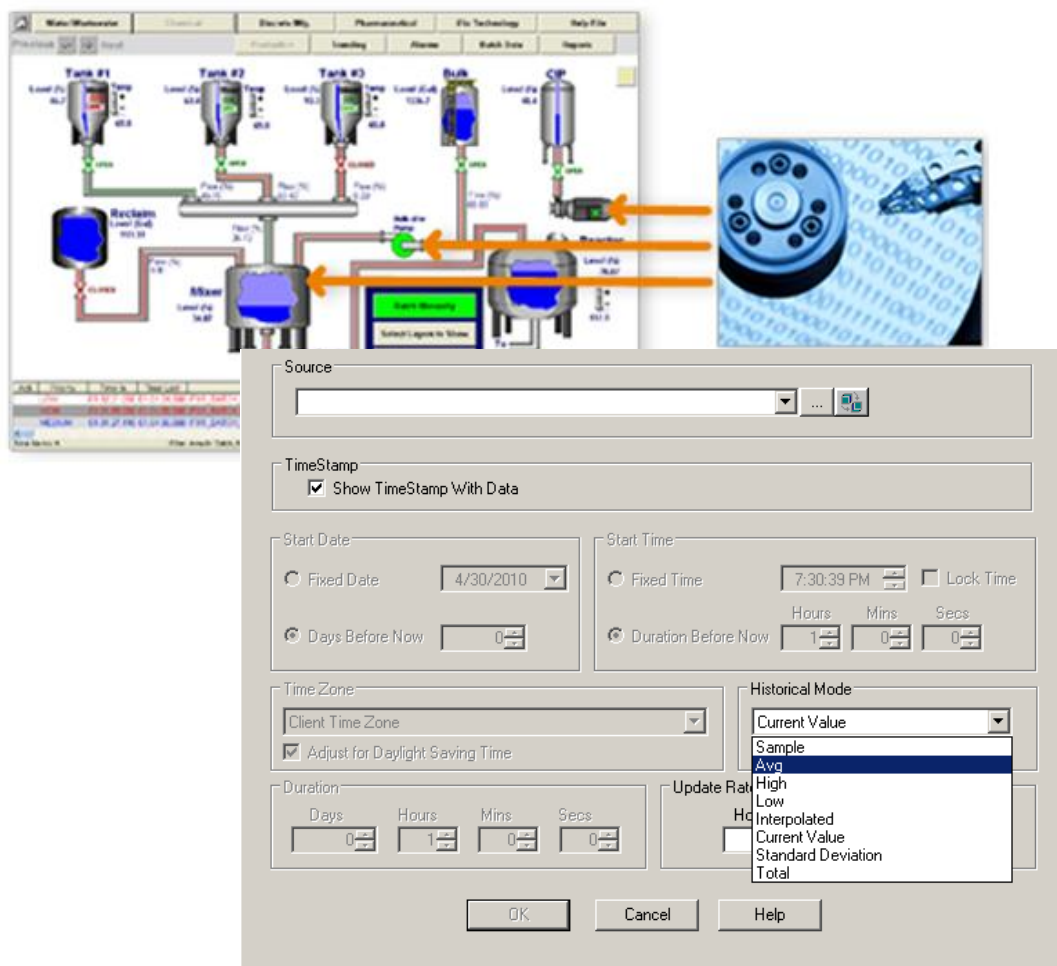


**Microsoft
Windows 7, 32-bit**

Support coming in the next 3 months

iFIX 5.1 – The Analytical SCADA

Historian Data Source for Graphics

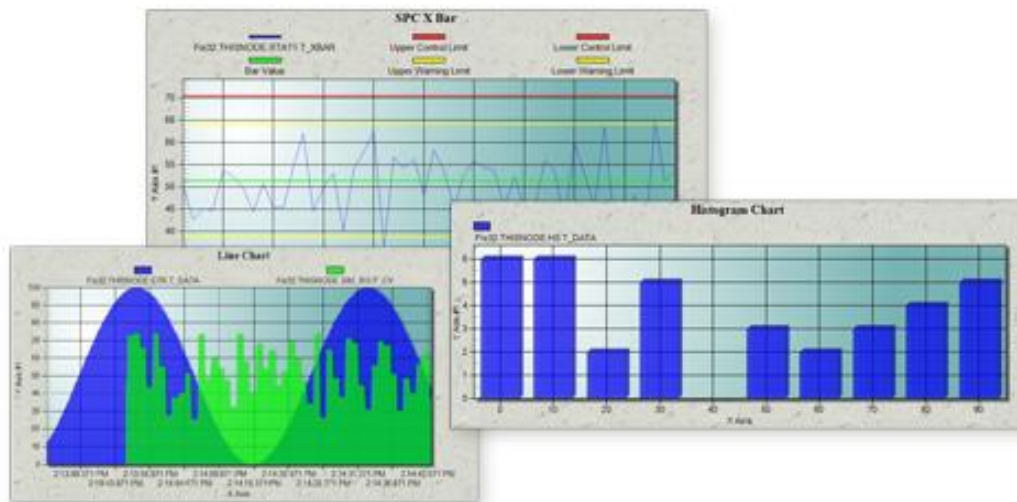


- Animations
- Dynamos
- Datalinks

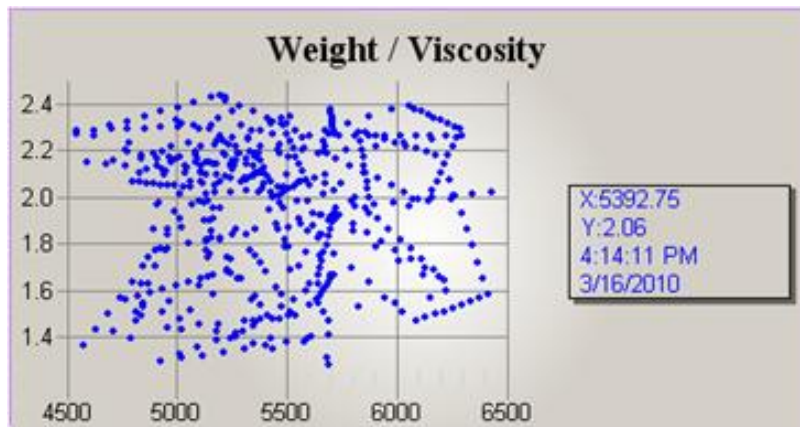
- Multiple Historian Modes
- Dynamic Time Reference
- Scripting Control

iFIX 5.1 – The Analytical SCADA

Chart Enhancements

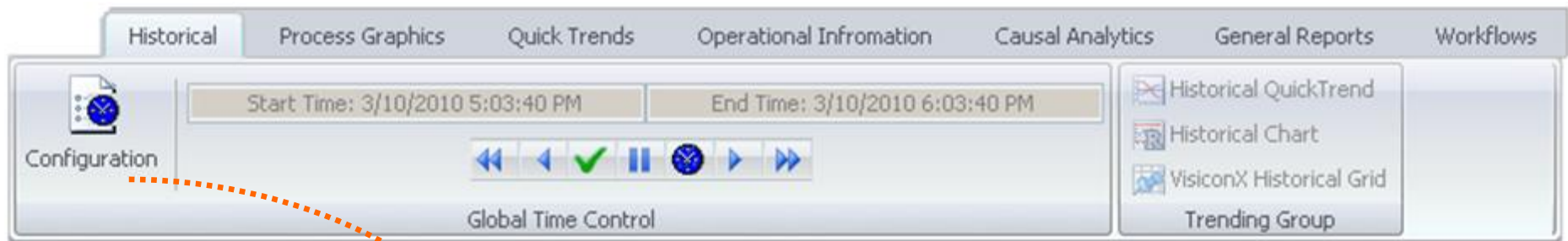


- XY Charts, Line Charts, Logarithmic Charts
- New sampling mode for trending to better understand quick bursts of data



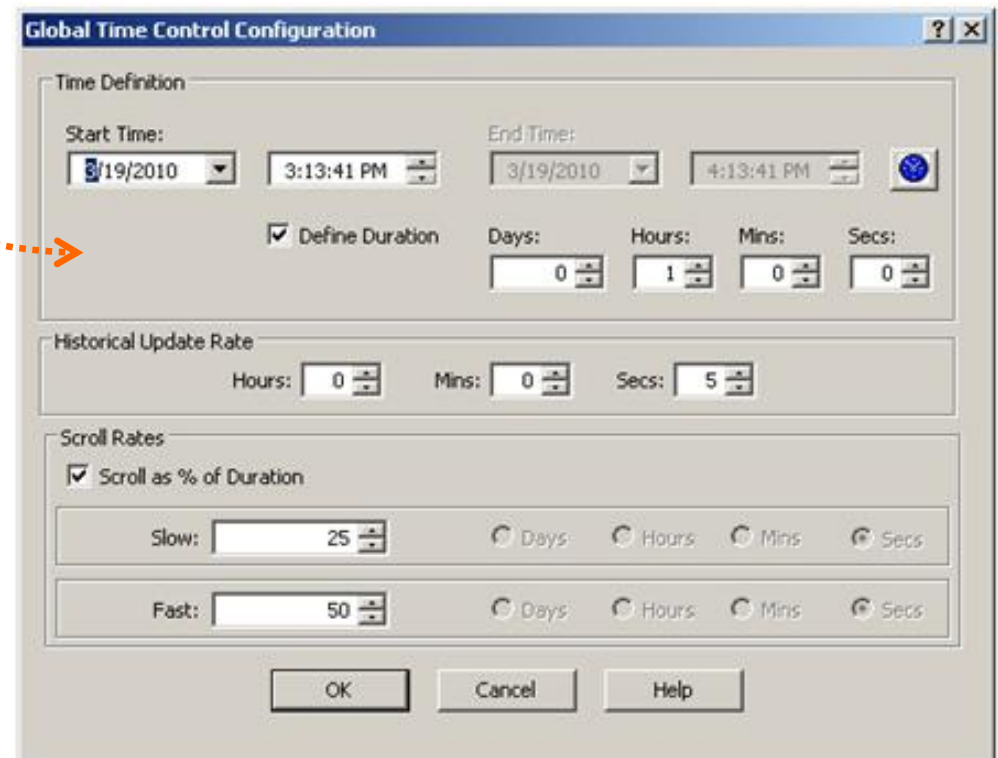
iFIX 5.1 – The Analytical SCADA

Historical Playback



Play, Pause, Set Timeframe

- Quicker Access & Historical Control
- Total Graphic Control of Customized Local Object Control
- Analyze through passing time from Objects



iFIX 5.1 – Failover Enhancements

Remote Maintenance Mode

Primary



Backup



- Pause/Reset synchronization remotely through Clients
 - Troubleshooting system tags to monitor health of Failover SCADAs
 - Auto tuning of synchronization up to 120 seconds for data transfers
- Increased flexibility when updating redundant systems!

Thank You!

