

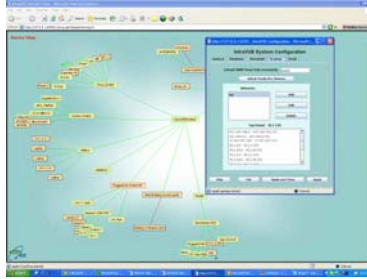
## **IntraVUE 2.0 Key Features**

- 1) Performance
  - CPU load is below 10% for systems up to 512 nodes
  - Browser full load time is less than 3 seconds
- 2) Complex Network support
  - Capable of automatically dealing with Cisco VLANs
  - Allowing more tolerance for loops or multiple paths
- 3) Focus on quickly highlighting the common problems via powerful new Threshold graphing and enhanced Event Log
  - Intermittent communication disruptions
  - Devices starting to fail
  - Sources of large amounts of traffic
  - Duplicate Addresses
  - Accidental creation of communication loops

## **IntraVUE 2.0 Key Features**

- 4) Future for the automatic integration of other information
  - Protocol specific device data (EtherNet/IP & PROFINET)
  - HMI data such as tag names
  - Extending beyond IP based devices
- 5) Portability
  - USB key will allow movement and pre-registration
  - Web based Administration will allow remote management
- 6) Localization (Future)
  - French and German versions to be released in August

## Administrative functions are now fully web based for remote management



Administration can be performed either locally at the computer running IntraVUE or remote from any location that has web access.



System Defaults



Backup & Restore



Threshold defaults

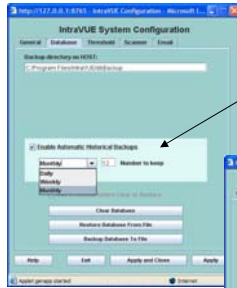


Network Configuration



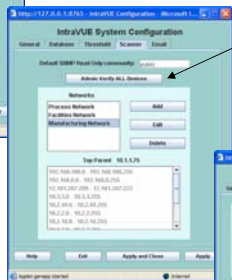
Email

## New Administrative features



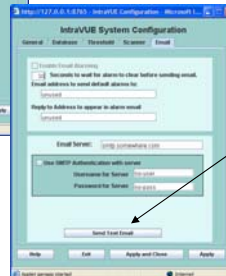
### Enable Automatic Back-ups

Provides back-ups in the event of a shutdown creating a corrupted database.



### Admin Verify ALL Devices

Provides a means to verify all devices by a single command.



### Send a Test Email

Can send a test email to insure the email settings are correct.

## Enhanced information available from a mouse click and then select

**Event Log**

**Trending**

**Custom SNMP Data Sheet**

**Device details and Links**

## New consolidated Properties Window with device details plus 12 Web Links

- Quick and easy Access to:**
- Embedded web pages
  - Data Sheets
  - User Manuals
  - Documentation
  - Procedures

Device properties window provides consolidated information on the IP and MAC addresses as well as category, location, operational description and even serial number or asset tag.

Additional links allow viewing live data from the devices web interface or documentation which can provide all the details about a device such as Cad drawings and Operating Procedures.

## Powerful Event Log with advanced search and filtering

### Network Selection:

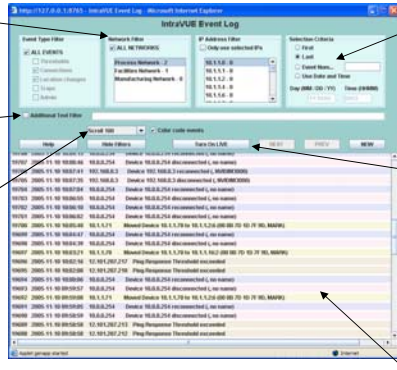
Allows the ability to select a single network if IntraVUE is monitoring separate networks or allows viewing events for all networks.

### Search by text:

Allows the ability to select a set of alpha-numeric characters such as MAC address, Device name, or event description as a filter.

### Scrolling selection:

Allows the ability to select the size of the data to be retrieved and provides a scroll bar. Can be set at ranges of 100, 500, 1000, and 2000 events. Provides easy and contiguous events eliminating breaks created in the get next and previous paging structures.



### Order or Time Selection:

Allows the ability to select a specific date and time to allow focus to a specific event. Can start the list at the beginning or end of the sequence selected.

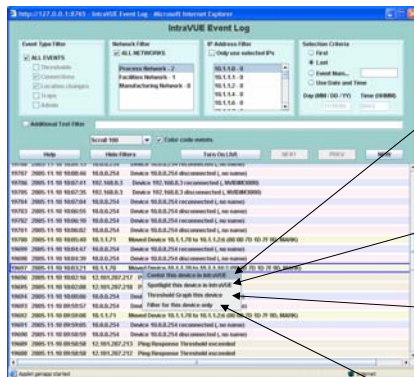
### Live viewer:

Allows the ability to have the events displayed as they happen. Useful in specific installation or debugging applications.

### Color Codes for Event classes:

Allows the ability to have the events color coded to allow an easier viewing of the different types at a particular time.

## Eliminating keyboard entry in the Event Log



Click on a specific event and select the Device or group of Devices to:

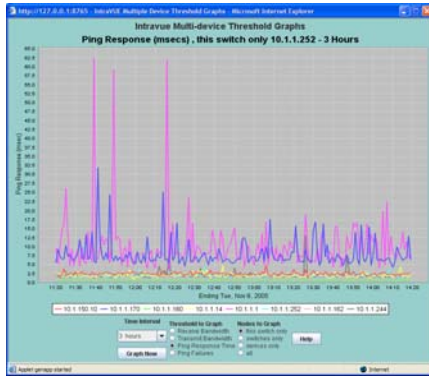
Center the device on the IntraVUE screen

This selection will place a Icon mark on the node(s) selected

Will bring up the Threshold graph for this device

Filter the Event Log to the selected device(s)

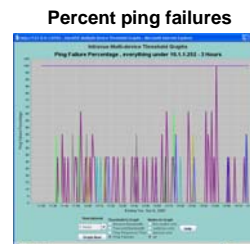
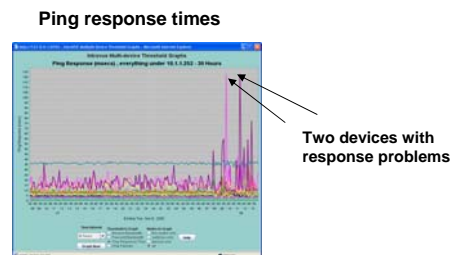
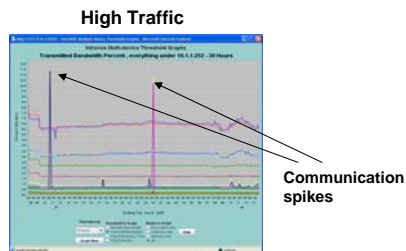
## Threshold Graphing allows a quick overview



Quickly identify which device out of hundreds that may be:

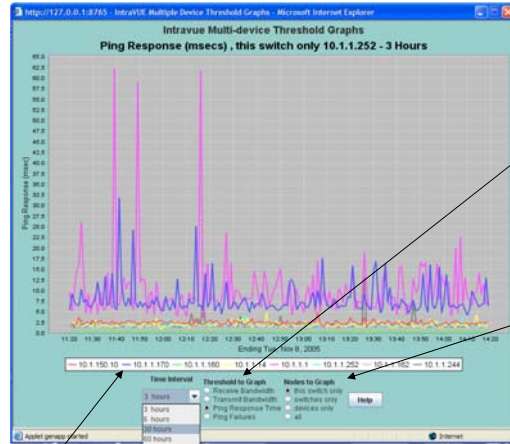
- Generation excessive Traffic or broadcast storms
- Requesting large files or multicast data
- Having intermittent connections
- Becoming overloaded and responding sluggishly

## Click on Threshold graph to quickly identify problems



Identify connection or intermittent communication failures

## Threshold Graphing allows visualization of key parameters



Adjust the parameters to search

Choose one of four key parameters

- Transmitted Bandwidth
- Received Bandwidth
- Ping Response Time
- Ping Failures

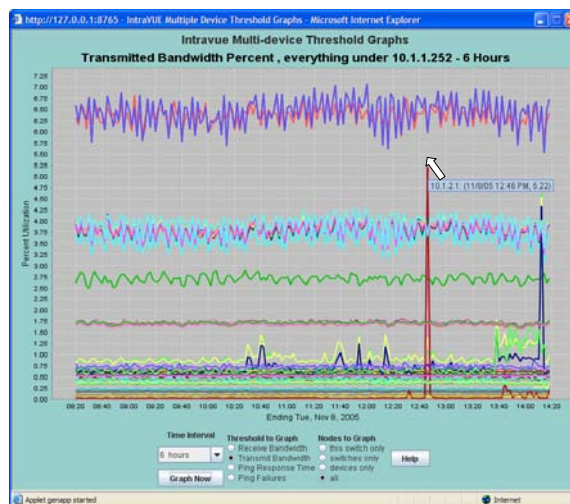
Choose one of four groups to display

- Selected switch only
- The switch and only the Switches below
- The switch and only the end devices below
- The Switch and all devices below

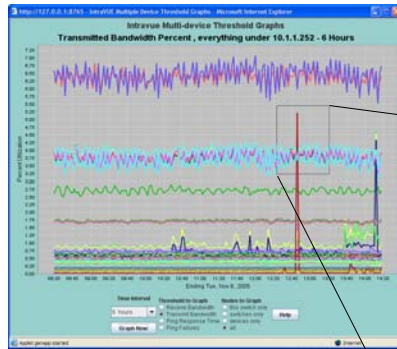
IP addresses are listed and color coded when the total number is less than 10

Select a time period to trend

## Hover Feature allows identification of the IP address, Date, Time, and Bandwidth



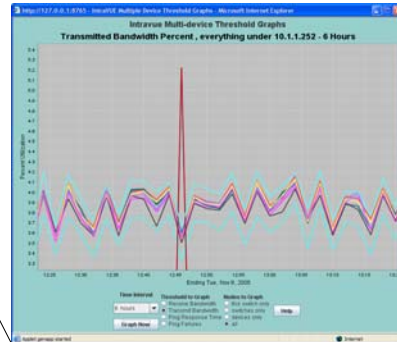
## Zoom Feature



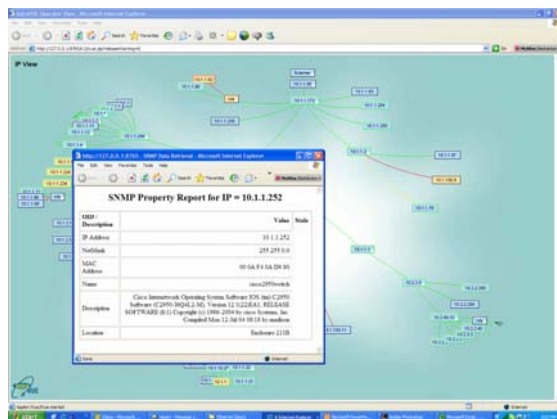
Zoom Feature allows an expanded and detailed view of the selected parameters.

Hold down the left mouse button and draw a box around the desired area to zoom on.

Hold the left mouse and move from bottom right to upper left to zoom back out.



## Custom Display of SNMP Data



Require specific SNMP data from a switch or device can be easily preconfigured. Static and dynamic data located in SNMP MIBs are easily retrieved by a single click of the mouse.

## Powerful Graphical features are Enhanced

