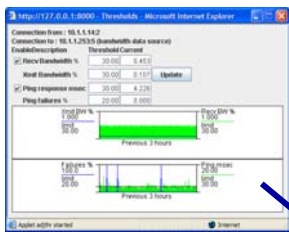


Powerful and Intuitive Graphical software for support of Industrial Ethernet Applications

IntraVUE provides the graphical equivalent of relay-ladder logic power-flow, but for the communications between devices. Line colors indicate health and details are acquired by a click of the mouse! Developed for technicians responsible for the industrial devices the software allows quick identification and support by local personnel.



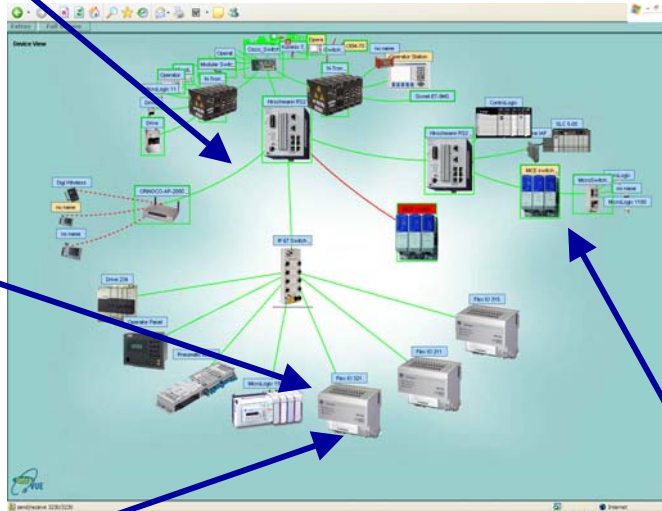
Trending Communication Between Devices

Right clicking a connection opens a window in which trends can help identify communication problems.

ID	Time	Description	Action
13963	10.1.1.223	Device 10.1.1.223 disconnected with SNMP Support (08 00 26 24 49 86, Software CDP TPA2)	Conn
13962	10.1.1.224	Device 10.1.1.224 disconnected (No name)	Conn
13961	10.1.1.223	Device 10.1.1.223 disconnected (08 00 26 24 49 86, Software CDP TPA2)	Conn
13960	10.1.1.244	Ping Response Threshold Exceeded	Thres
13959	10.1.1.244	Ping Response Threshold Exceeded	Thres
13958	10.1.1.31	Ping Response Threshold Exceeded	Thres

Communication Event log

Event Logs provide valuable details of activities which include devices connecting, disconnecting or moving. Alarms levels can help identify cause and effect issues created when real time communications or program downloads affect network traffic. Alarms in addition to being logged can generate email messages or notification to HMI/SCADA applications.



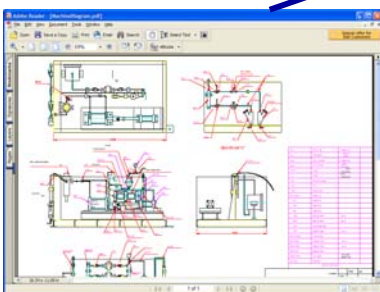
Main display allows entire network to be navigated

A single page that may have hundreds of devices was accomplished by using a hyperbolic graphical engine that allows the user to navigate around the network. The ability to see the interconnections without complex paging keeps the viewing simple. The ability to add pictures extends the understanding.



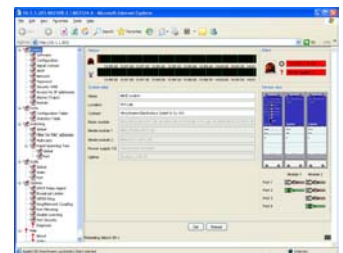
Device Details

All the necessary details as well as simplified methods to ping, telnet, or open up a ftp session are organized in a single view.



Documentation-User manual, machine or wiring diagram

Extending the device maintenance focus, IntraVUE establishes a framework in which each device can have up to 12 links to allow user manual, wiring diagrams, and operating procedures to be opened from the device details window.



Link to device web page

Most devices offering an Ethernet connection also provide a web page interface for configuration and diagnostics. IntraVUE automatically discovers if a link is available and creates a button to gain access. There is no hunting for the appropriate URL just select the device and open the web-page.

Empower local resources and reduce response times by 80%, resulting in significant reduction of data and process downtime!

Easily identify typical plant floor problems

- Duplicate addressing IP & MAC
- Cabling problems (connector or grounding)
- Broadcast Storms
- Intermittent device problems
- Device lock-ups

IP	MAC	Device Name	Device Type	Device Location
10.1.1.1	00:0C:29:00:00:00	Switch	Switch	10.1.1.1
10.1.1.2	00:0C:29:00:00:01	Switch	Switch	10.1.1.2
10.1.1.3	00:0C:29:00:00:02	Switch	Switch	10.1.1.3
10.1.1.4	00:0C:29:00:00:03	Switch	Switch	10.1.1.4
10.1.1.5	00:0C:29:00:00:04	Switch	Switch	10.1.1.5
10.1.1.6	00:0C:29:00:00:05	Switch	Switch	10.1.1.6
10.1.1.7	00:0C:29:00:00:06	Switch	Switch	10.1.1.7
10.1.1.8	00:0C:29:00:00:07	Switch	Switch	10.1.1.8
10.1.1.9	00:0C:29:00:00:08	Switch	Switch	10.1.1.9
10.1.1.10	00:0C:29:00:00:09	Switch	Switch	10.1.1.10
10.1.1.11	00:0C:29:00:00:0A	Switch	Switch	10.1.1.11
10.1.1.12	00:0C:29:00:00:0B	Switch	Switch	10.1.1.12
10.1.1.13	00:0C:29:00:00:0C	Switch	Switch	10.1.1.13
10.1.1.14	00:0C:29:00:00:0D	Switch	Switch	10.1.1.14
10.1.1.15	00:0C:29:00:00:0E	Switch	Switch	10.1.1.15
10.1.1.16	00:0C:29:00:00:0F	Switch	Switch	10.1.1.16
10.1.1.17	00:0C:29:00:00:10	Switch	Switch	10.1.1.17
10.1.1.18	00:0C:29:00:00:11	Switch	Switch	10.1.1.18
10.1.1.19	00:0C:29:00:00:12	Switch	Switch	10.1.1.19
10.1.1.20	00:0C:29:00:00:13	Switch	Switch	10.1.1.20
10.1.1.21	00:0C:29:00:00:14	Switch	Switch	10.1.1.21
10.1.1.22	00:0C:29:00:00:15	Switch	Switch	10.1.1.22
10.1.1.23	00:0C:29:00:00:16	Switch	Switch	10.1.1.23
10.1.1.24	00:0C:29:00:00:17	Switch	Switch	10.1.1.24
10.1.1.25	00:0C:29:00:00:18	Switch	Switch	10.1.1.25
10.1.1.26	00:0C:29:00:00:19	Switch	Switch	10.1.1.26
10.1.1.27	00:0C:29:00:00:1A	Switch	Switch	10.1.1.27
10.1.1.28	00:0C:29:00:00:1B	Switch	Switch	10.1.1.28
10.1.1.29	00:0C:29:00:00:1C	Switch	Switch	10.1.1.29
10.1.1.30	00:0C:29:00:00:1D	Switch	Switch	10.1.1.30
10.1.1.31	00:0C:29:00:00:1E	Switch	Switch	10.1.1.31
10.1.1.32	00:0C:29:00:00:1F	Switch	Switch	10.1.1.32
10.1.1.33	00:0C:29:00:00:20	Switch	Switch	10.1.1.33
10.1.1.34	00:0C:29:00:00:21	Switch	Switch	10.1.1.34
10.1.1.35	00:0C:29:00:00:22	Switch	Switch	10.1.1.35
10.1.1.36	00:0C:29:00:00:23	Switch	Switch	10.1.1.36
10.1.1.37	00:0C:29:00:00:24	Switch	Switch	10.1.1.37
10.1.1.38	00:0C:29:00:00:25	Switch	Switch	10.1.1.38
10.1.1.39	00:0C:29:00:00:26	Switch	Switch	10.1.1.39
10.1.1.40	00:0C:29:00:00:27	Switch	Switch	10.1.1.40
10.1.1.41	00:0C:29:00:00:28	Switch	Switch	10.1.1.41
10.1.1.42	00:0C:29:00:00:29	Switch	Switch	10.1.1.42
10.1.1.43	00:0C:29:00:00:2A	Switch	Switch	10.1.1.43
10.1.1.44	00:0C:29:00:00:2B	Switch	Switch	10.1.1.44
10.1.1.45	00:0C:29:00:00:2C	Switch	Switch	10.1.1.45
10.1.1.46	00:0C:29:00:00:2D	Switch	Switch	10.1.1.46
10.1.1.47	00:0C:29:00:00:2E	Switch	Switch	10.1.1.47
10.1.1.48	00:0C:29:00:00:2F	Switch	Switch	10.1.1.48
10.1.1.49	00:0C:29:00:00:30	Switch	Switch	10.1.1.49
10.1.1.50	00:0C:29:00:00:31	Switch	Switch	10.1.1.50
10.1.1.51	00:0C:29:00:00:32	Switch	Switch	10.1.1.51
10.1.1.52	00:0C:29:00:00:33	Switch	Switch	10.1.1.52
10.1.1.53	00:0C:29:00:00:34	Switch	Switch	10.1.1.53
10.1.1.54	00:0C:29:00:00:35	Switch	Switch	10.1.1.54
10.1.1.55	00:0C:29:00:00:36	Switch	Switch	10.1.1.55
10.1.1.56	00:0C:29:00:00:37	Switch	Switch	10.1.1.56
10.1.1.57	00:0C:29:00:00:38	Switch	Switch	10.1.1.57
10.1.1.58	00:0C:29:00:00:39	Switch	Switch	10.1.1.58
10.1.1.59	00:0C:29:00:00:3A	Switch	Switch	10.1.1.59
10.1.1.60	00:0C:29:00:00:3B	Switch	Switch	10.1.1.60
10.1.1.61	00:0C:29:00:00:3C	Switch	Switch	10.1.1.61
10.1.1.62	00:0C:29:00:00:3D	Switch	Switch	10.1.1.62
10.1.1.63	00:0C:29:00:00:3E	Switch	Switch	10.1.1.63
10.1.1.64	00:0C:29:00:00:3F	Switch	Switch	10.1.1.64
10.1.1.65	00:0C:29:00:00:40	Switch	Switch	10.1.1.65
10.1.1.66	00:0C:29:00:00:41	Switch	Switch	10.1.1.66
10.1.1.67	00:0C:29:00:00:42	Switch	Switch	10.1.1.67
10.1.1.68	00:0C:29:00:00:43	Switch	Switch	10.1.1.68
10.1.1.69	00:0C:29:00:00:44	Switch	Switch	10.1.1.69
10.1.1.70	00:0C:29:00:00:45	Switch	Switch	10.1.1.70
10.1.1.71	00:0C:29:00:00:46	Switch	Switch	10.1.1.71
10.1.1.72	00:0C:29:00:00:47	Switch	Switch	10.1.1.72
10.1.1.73	00:0C:29:00:00:48	Switch	Switch	10.1.1.73
10.1.1.74	00:0C:29:00:00:49	Switch	Switch	10.1.1.74
10.1.1.75	00:0C:29:00:00:4A	Switch	Switch	10.1.1.75
10.1.1.76	00:0C:29:00:00:4B	Switch	Switch	10.1.1.76
10.1.1.77	00:0C:29:00:00:4C	Switch	Switch	10.1.1.77
10.1.1.78	00:0C:29:00:00:4D	Switch	Switch	10.1.1.78
10.1.1.79	00:0C:29:00:00:4E	Switch	Switch	10.1.1.79
10.1.1.80	00:0C:29:00:00:4F	Switch	Switch	10.1.1.80

Document your network

The ability of IntraVUE to automatically discover all of the devices on the network and then automatically map their connections is very unique. This feature is extended by allowing the information to be exported into excel spreadsheets. IntraVUE can save days of effort trying to manually check for proper connection details and IP and associated MAC addresses. Maintenance of the devices is simplified and you can be sure individuals are working from accurate information.

Device and connection information into spreadsheet

Network Vision provides software solutions that assist in the deployment, management and failure recovery of Industrial devices that are communicating over TCP/IP. IntraVUE, our flagship product is a powerful graphical interface that provides an automated and accurate view of device interactions in a real time display. In addition the software links all the necessary real time data and support documentation in an easy to use browser accessed format. Developed specifically for individuals responsible for the devices in which a portion of the problems are communication.



Network Vision Software
44 Merrimac St.
Newburyport, MA 01950
+1 978 499-7800 www.intravue.net