



# Proficiency\* Plant Applications 6.1

## Operations Performance Management Software

### Highlights

- Operations Performance Management Best Practices from the world's leading companies
- Standards-based (S95) Unified Manufacturing Database
- Service Oriented Architecture for easier enterprise connectivity
- Familiar user interface with advanced features designed for future growth

### Benefits

- Improve performance with capabilities designed to solve the toughest manufacturing challenges
- Drive precision with the ability to Visualize, Analyze, Optimize, and Execute
- Ensure uncompromising quality with GE's renowned expertise in Six Sigma and Lean, combined with its own manufacturing operations
- Leverage faster deployment with commercial-off-the-shelf (COTS) software for a unique boost to your deployment plans

### Proven results

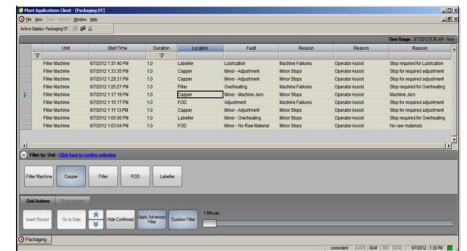
- \$4,000,000 operating savings in year 1 - Paper producer
- 25% decrease in defects - International glass manufacturer
- 10% increase in OEE - Food and Beverage Company
- Elimination of overruns - Major global brewer
- 20% decrease in inventory - Global CPG Company

GE's Proficiency Plant Applications 6.1 takes your Operations Performance Management to the next level – helping you solve your toughest operational business challenges and keeping you ahead of the competition. It features even greater flexibility, connectivity and scalability to address your critical production needs today and into the future.

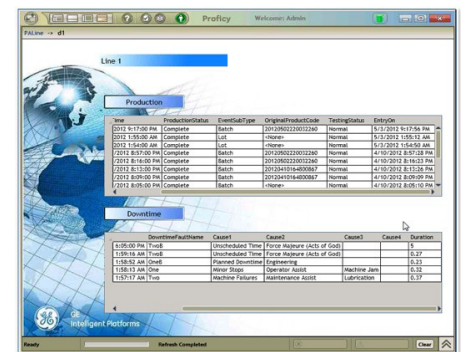
Proficiency Plant Applications V6.1 reaffirms Proficiency Plant Applications in its second decade as the leader in manufacturing execution software (MES). Proficiency MES is used to optimize performance, manage ongoing daily tasks and balance the competing aspects of production operations. Companies of all sizes and industries around the world rely on the power of Proficiency Plant Applications – a holistic Operations Performance Management system – to maximize their operational effectiveness and profitability.

### Proficiency Plant Applications

- Part of the broad Proficiency suite that also offers Operator Workflow Management, Batch and SCADA software
- Open & layered architecture extends the value of existing plant systems by layering advanced application capabilities seamlessly into your ecosystem
- Modular & scalable applications stand alone or work together to support installations small or large, local or global
- Advanced architecture is non-intrusive to plant floor controls and operations, and supports the broad range of production environments



The enhanced operator displays in Plant Applications V6.1 make entering and viewing information easier so you can make informed decisions faster.



Plant Applications V6.1 provides powerful analytical and reporting capabilities for tracking genealogy, quality and operating performance across a site or across a business.



# Proficy\* Plant Applications 6.1

## Drive Operational Performance Management

Proficy Plant Applications empowers you to truly understand Operations Performance down to the individual asset by definitively showing the biggest areas of, and reasons for, productivity losses such as defects, waste and downtime. Proficy software translates raw production data into performance metrics that the system monitors automatically and manages constantly—freeing operators from the non-value add work of collecting, logging and interpreting this information manually.

Extensive reporting and analysis tools offer unmatched analytical capabilities to find problems and drive the right activities for performance improvements. With the Proficy architecture, you have the flexibility to evolve your systems yourself – using your own, in-plant personnel to maintain peak plant performance.

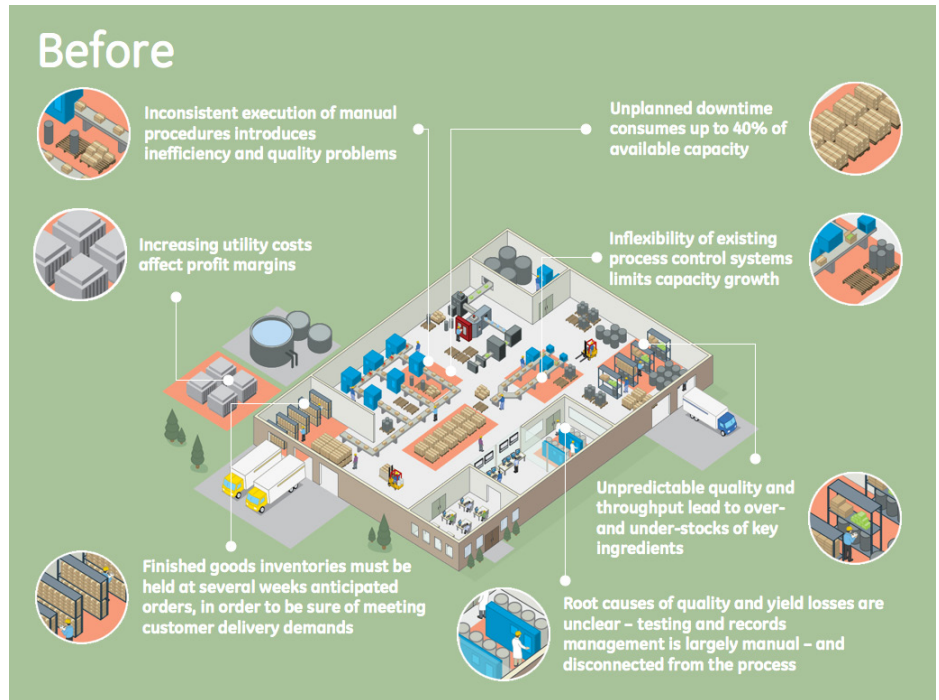
## Proficy Plant Applications Performance Modules

### Proficy Efficiency

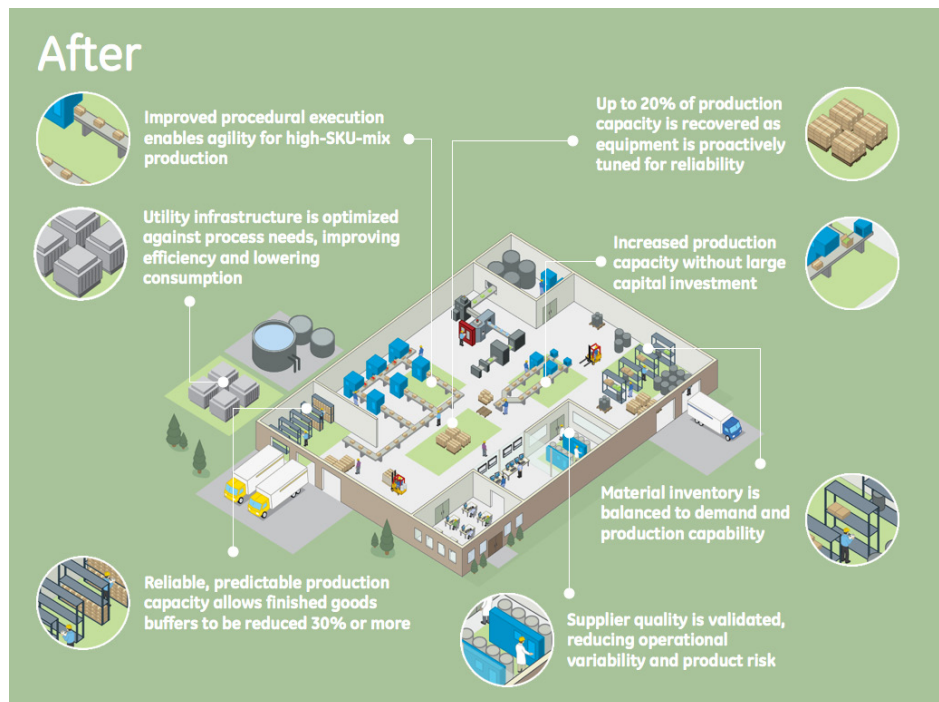
Proficy Efficiency tracks and monitors Overall Equipment Effectiveness (OEE) and other critical key performance indicators - downtime, waste, & production counts, MTBF, MTTR, and more.

- Automatically or manually associate events with causes and then analyze to identify root causes.
- Summarize and analyze data by context (e.g., equipment, product, personnel, time (hour, shift, day))
- Correlate events and reasons to actual production parameters. Utilize standard reports, ad-hoc reports and dashboards for real-time decision-making.

### Before Proficy MES



### After Proficy MES



## Proficy Production Management

Proficy Production Management oversees production operations, including functions to control product flow between equipment, develop product genealogy reports and make schedule changes to reduce excess inventory. It supports production schedule execution and product tracking against scheduled completion times with adjustments to optimize efficiencies. Proficy Production Management supports full traceability of individual products through every step of the manufacturing process allowing for auditable genealogy and production reporting.

## Proficy Quality

Proficy Quality ensures consistent quality in your products, giving you the real-time trends, statistics, and notifications to control quality levels while keeping up with the speed of your business. Proficy Quality integrates process, inspection and test data from both manual and automated sources and houses this information in one, integrated place. It also attaches operator comments, specifications, recipes and procedure documents to this information to ensure that you've established a single, definitive version of the truth.

Real-time product and process quality analysis and control in support of:

- Product specification management
- Manual & electronic data capture
- Conformance monitoring
- Limits & SPC / SQC Alerts
- Procedure documents linkage
- Rich trending tools

Proficy Quality helps your business objectives become manufacturing reality, with holistic performance management for all compliance management issues..

## Proficy Batch Analysis

Many batch execution systems today lack the advanced analysis and reporting tools necessary to present a comprehensive picture of batch operations in the context of the overall manufacturing facility. Without these key tools, it is very difficult for manufacturers to drive improvement initiatives. Proficy Batch Analysis is an ideal fit in these situations as it allows you to increase the overall quality and consistency of products and enables you to better understand and control variation in both new and existing batching applications.

With our unique layered applications approach and interface to standards-based commercially available batch execution systems, Proficy Batch Analysis is a great fit for both new and existing systems, supporting ISA-88 recipe analysis for products as formulation (BOM), procedures and equipment. It provides analysis of scheduled and completed recipes and generates electronic batch records.

## About GE Intelligent Platforms

GE Intelligent Platforms is a division of GE that offers software, control systems, services, and expertise in automation and embedded computing. We offer a unique foundation of agile and reliable technology providing customers a sustainable competitive advantage in the industries they serve, including energy, water, consumer packaged goods, oil and gas, government and defense, and telecommunications. GE Intelligent Platforms is headquartered in Charlottesville, VA. For more information, visit [www.ge-ip.com](http://www.ge-ip.com).

## GE Intelligent Platforms Contact Information

Americas: **1 800 433 2682** or **1 434 978 5100**

Global regional phone numbers are listed by location on our web site at [www.ge-ip.com/contact](http://www.ge-ip.com/contact)

[www.ge-ip.com](http://www.ge-ip.com)

